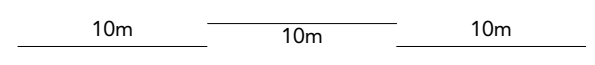
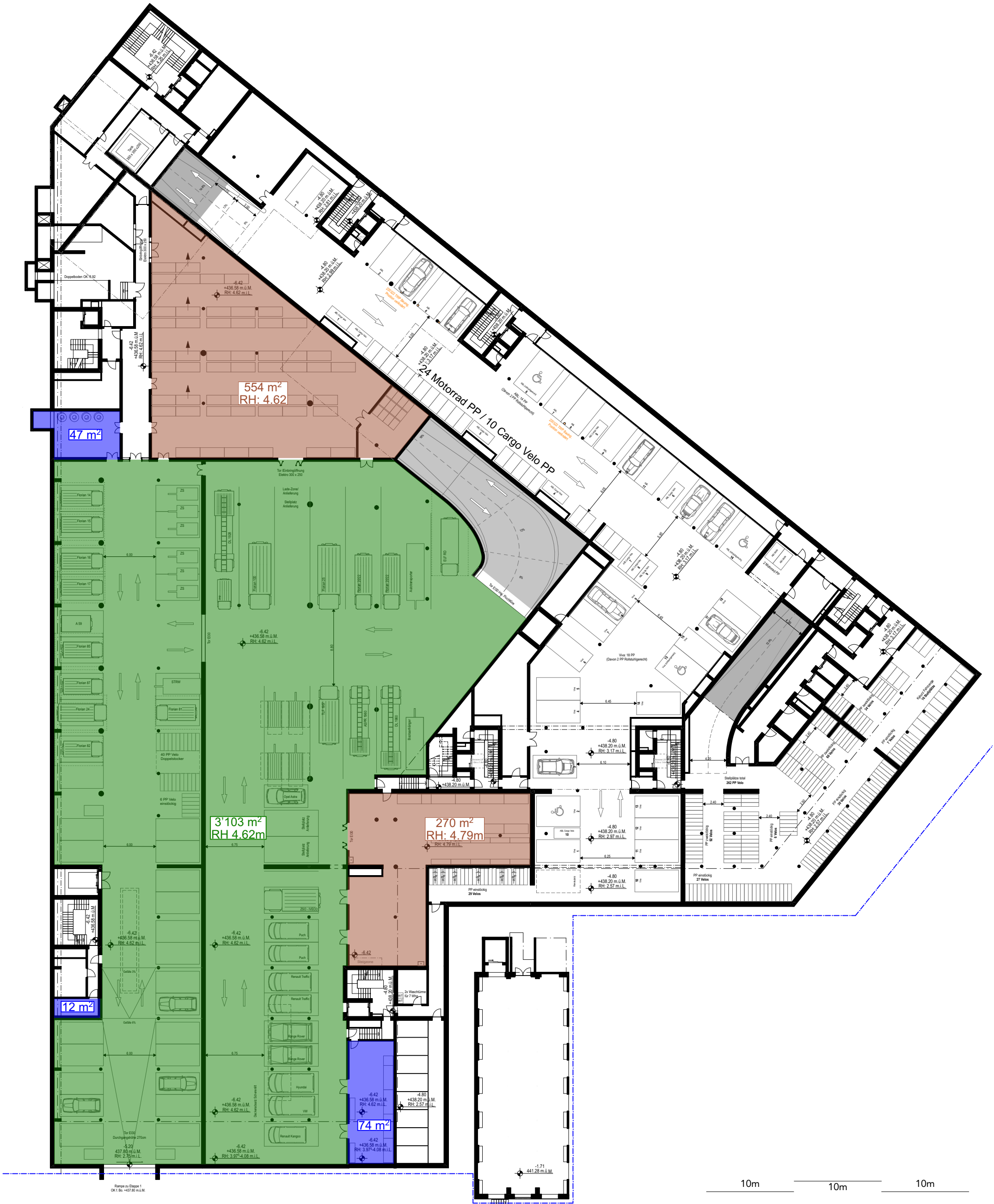
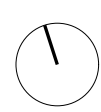


<b>Mietflächen Stadt Luzern 30.10.23</b>		1.UG	EG	1.OG	2.OG	3.OG		Total
Werkstätten		0 m <sup>2</sup>	738 m <sup>2</sup>	117 m <sup>2</sup>	0 m <sup>2</sup>	0 m <sup>2</sup>		855 m <sup>2</sup>
Konferenz/Aufenthalt		0 m <sup>2</sup>	0 m <sup>2</sup>	375 m <sup>2</sup>	957 m <sup>2</sup>	449 m <sup>2</sup>		1781 m <sup>2</sup>
Fahrzeughalle		3103 m <sup>2</sup>	3360 m <sup>2</sup>	0 m <sup>2</sup>	0 m <sup>2</sup>	0 m <sup>2</sup>		6463 m <sup>2</sup>
Garderobe/Toilette		0 m <sup>2</sup>	6 m <sup>2</sup>	904 m <sup>2</sup>	401 m <sup>2</sup>	66 m <sup>2</sup>		1377 m <sup>2</sup>
Lager		133 m <sup>2</sup>	129 m <sup>2</sup>	199 m <sup>2</sup>	130 m <sup>2</sup>	57 m <sup>2</sup>		648 m <sup>2</sup>
Nebennutzung/Erschliessung		0 m <sup>2</sup>	42 m <sup>2</sup>	693 m <sup>2</sup>	333 m <sup>2</sup>	153 m <sup>2</sup>		1221 m <sup>2</sup>
Grosslager		824 m <sup>2</sup>	0 m <sup>2</sup>	0 m <sup>2</sup>	0 m <sup>2</sup>	0 m <sup>2</sup>		824 m <sup>2</sup>
Büro		0 m <sup>2</sup>	0 m <sup>2</sup>	246 m <sup>2</sup>	610 m <sup>2</sup>	158 m <sup>2</sup>		1014 m <sup>2</sup>



**Mietflächen Stadt Luzern**  
**1.Untergeschoss | 1:400**  
 EWL-Areal Luzern | 30.10.23

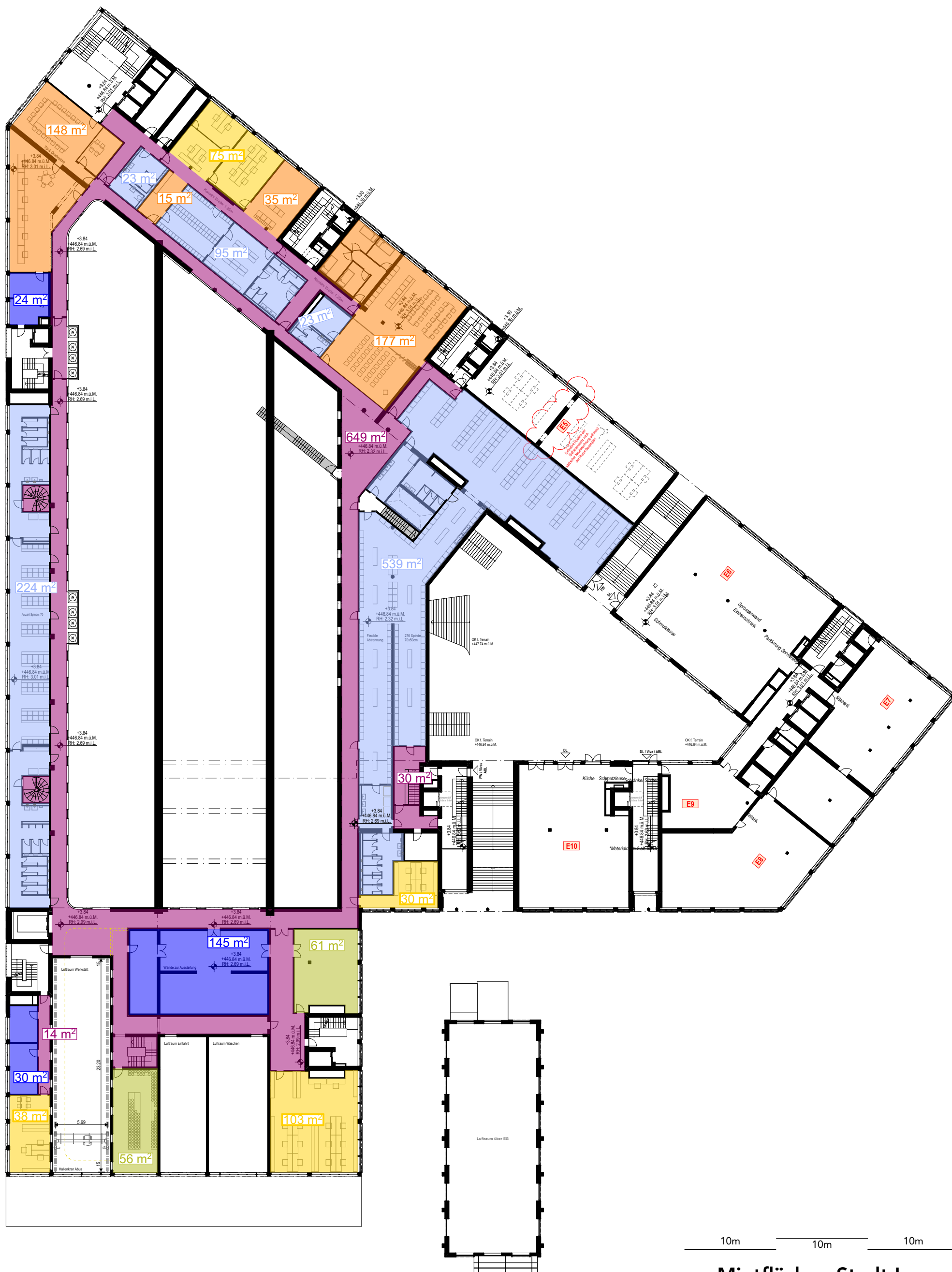




10m 10m 10m

Mietflächen Stadt Luzern  
 Erdgeschoss | 1:400  
 EWL-Areal Luzern | 30.10.23





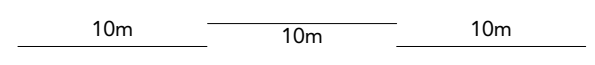
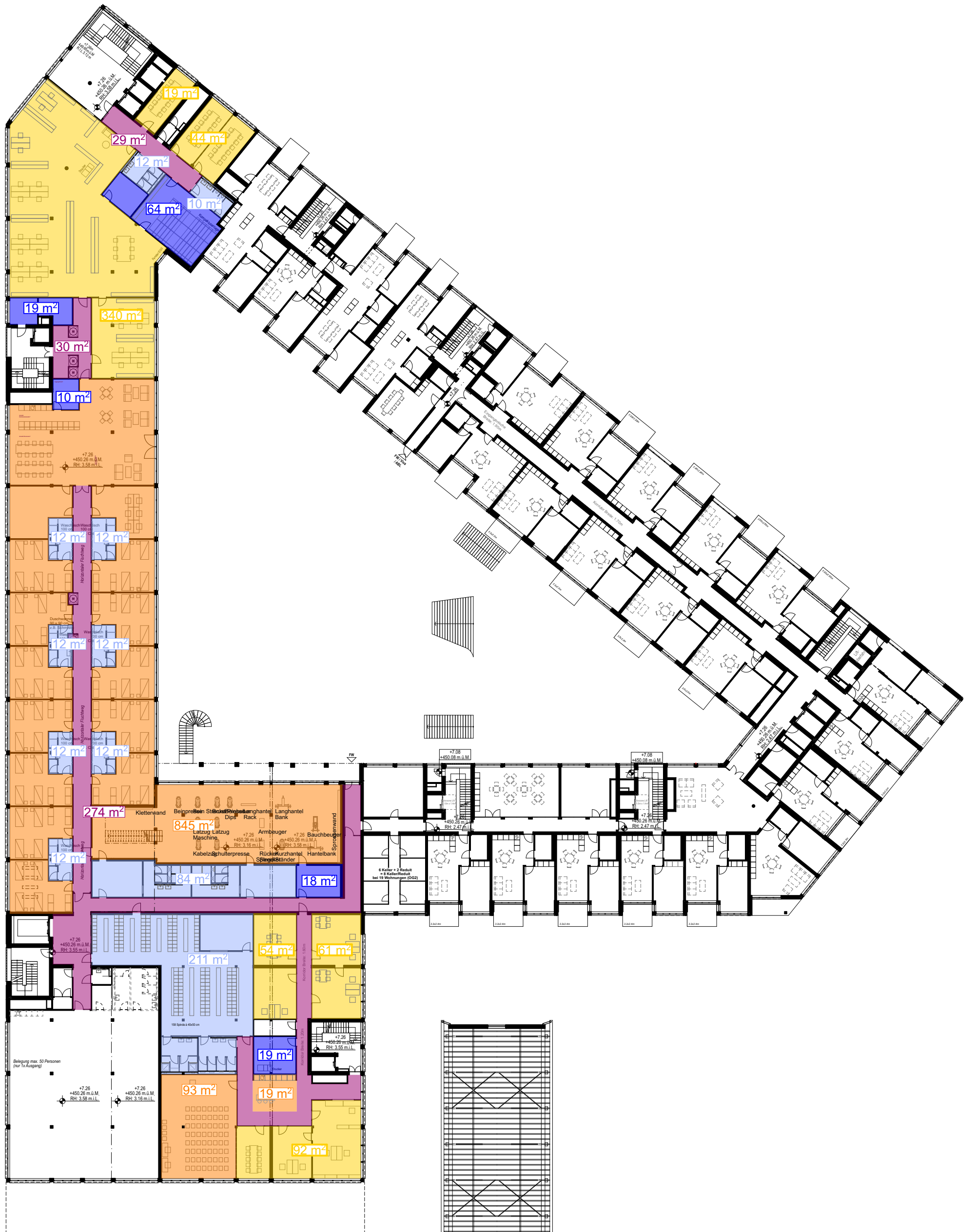
10m 10m 10m

# Mietflächen Stadt Luzern 1. Obergeschoss | 1:400

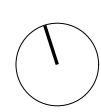
EWL-Areal Luzern | 30.10.23

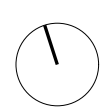
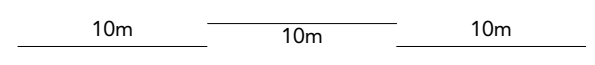






**Mietflächen Stadt Luzern**  
**2. Obergeschoss | 1:400**  
 EWL-Areal Luzern | 30.10.23





**Mietflächen Stadt Luzern**  
**3. Obergeschoss | 1:400**  
 EWL-Areal Luzern | 30.10.23