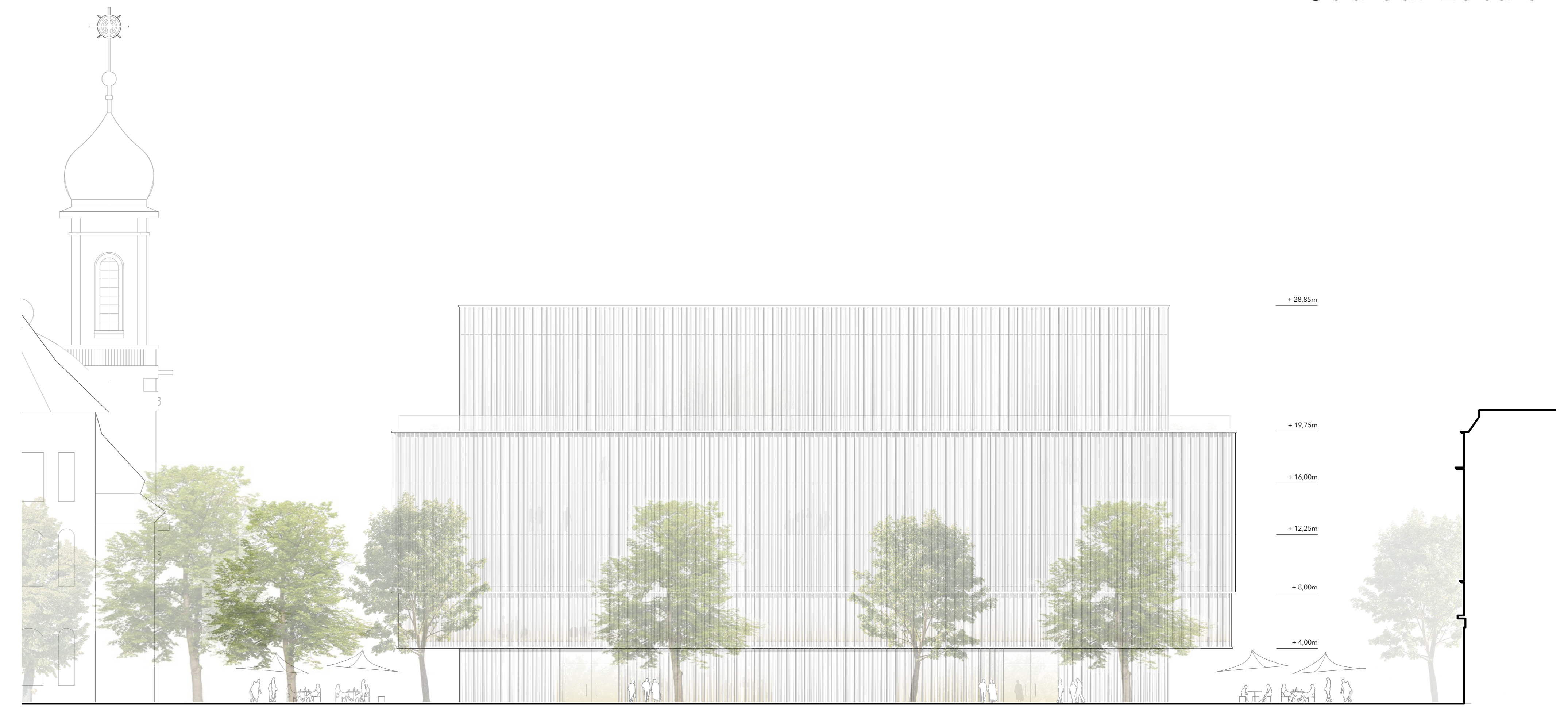
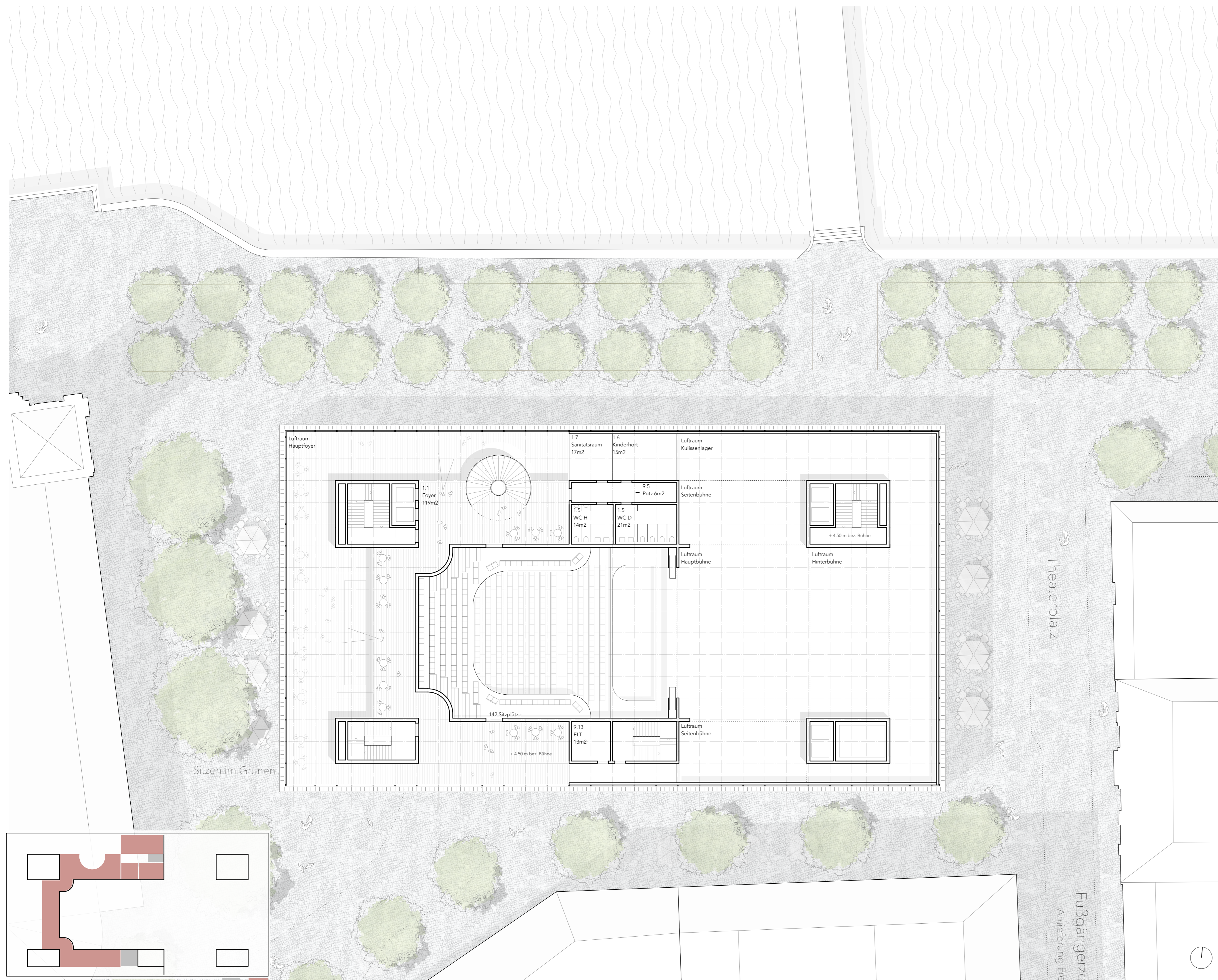


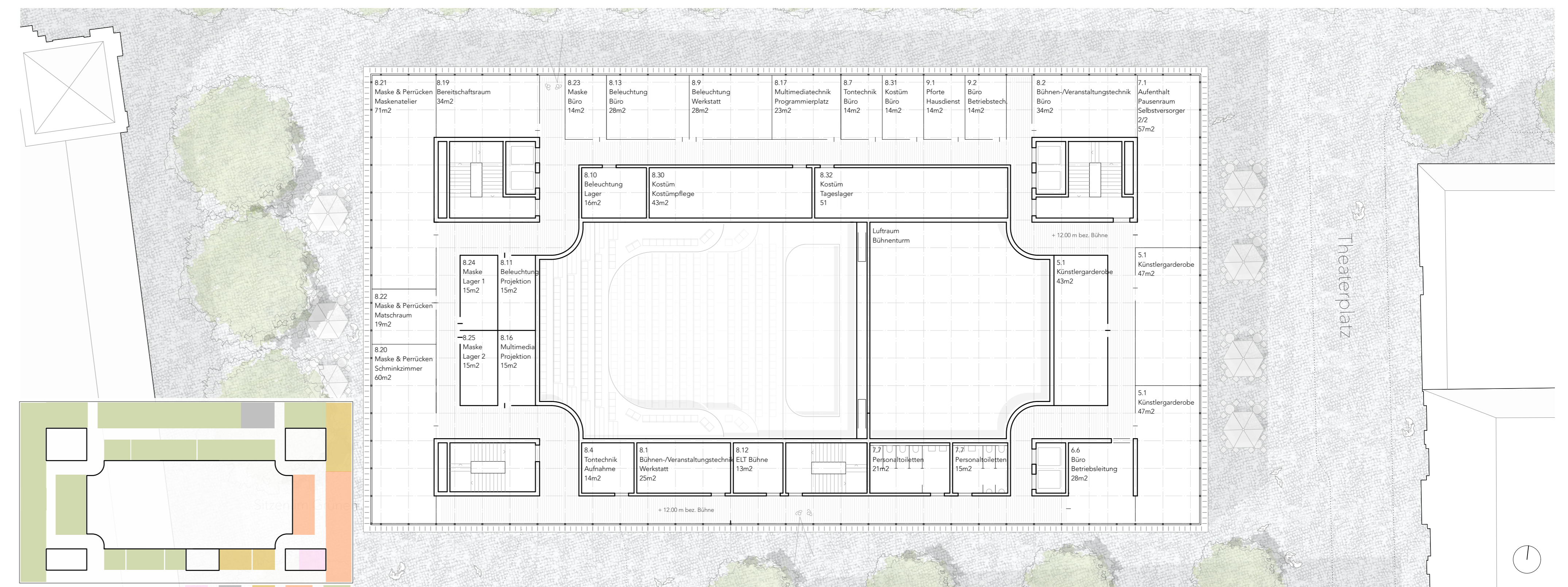
Ansicht Theaterstrasse | M 1:200



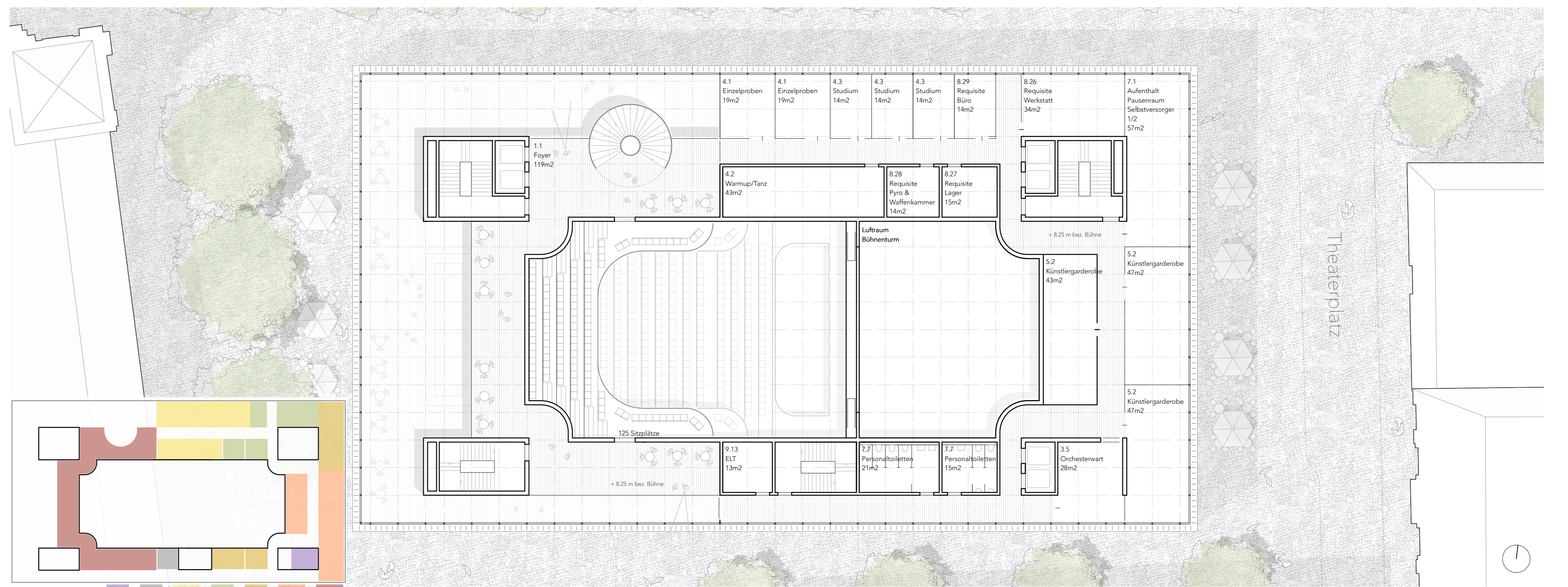
Ansicht Hirschgarten | M 1:200



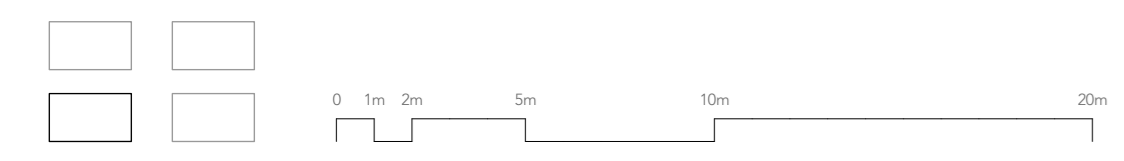
Grundriss 2. Obergeschoss | M 1:200



Grundriss 4. Obergeschoss | M 1:200

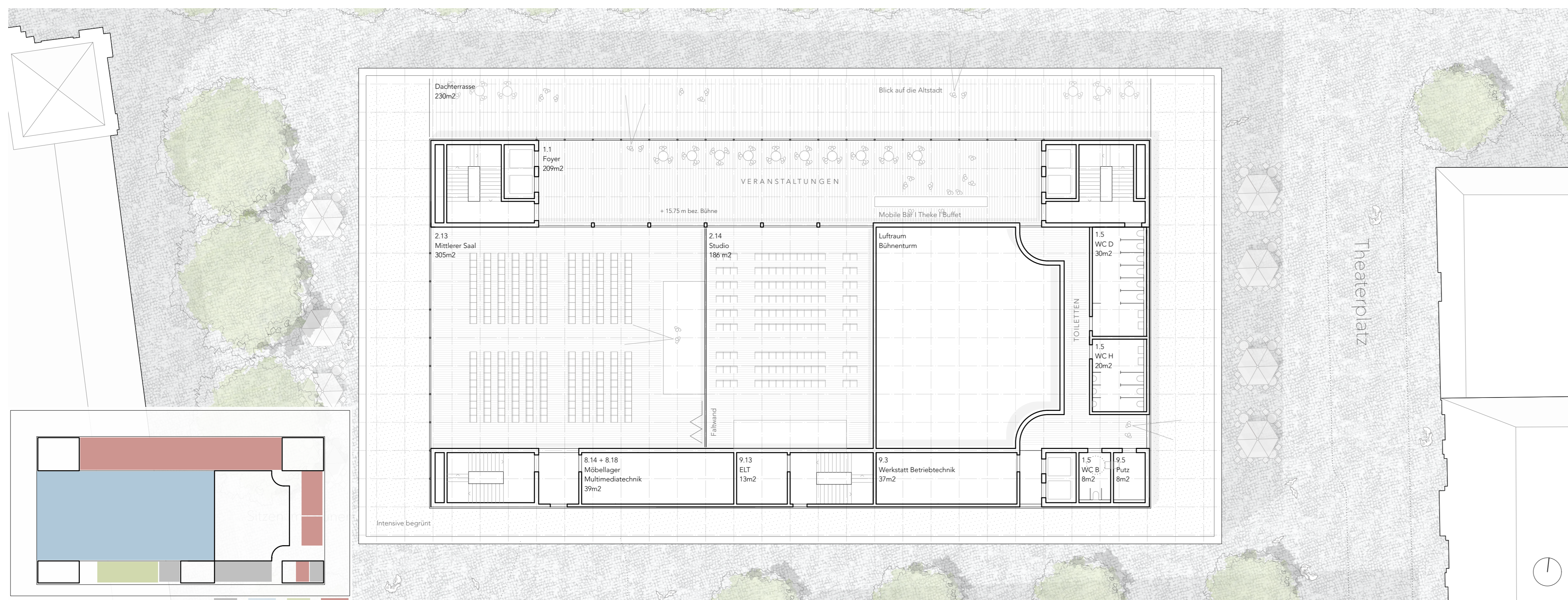


Grundriss 3. Obergeschoss | M 1:200

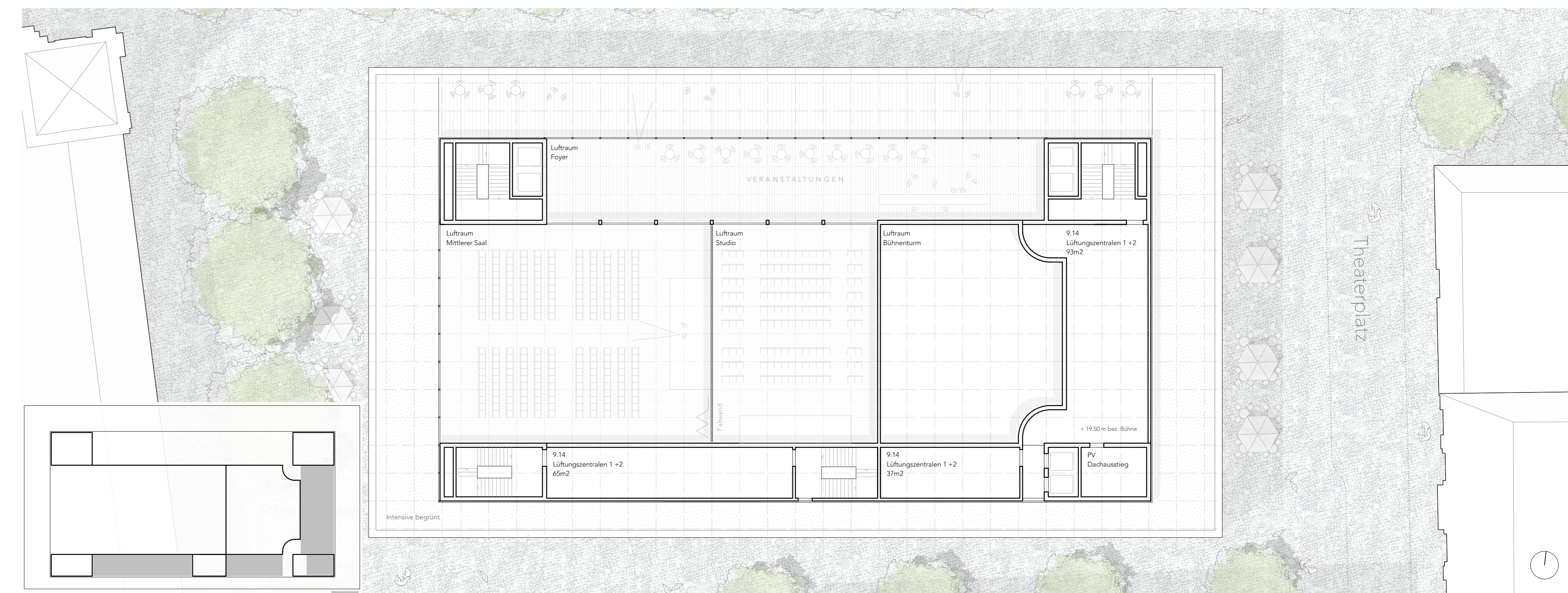




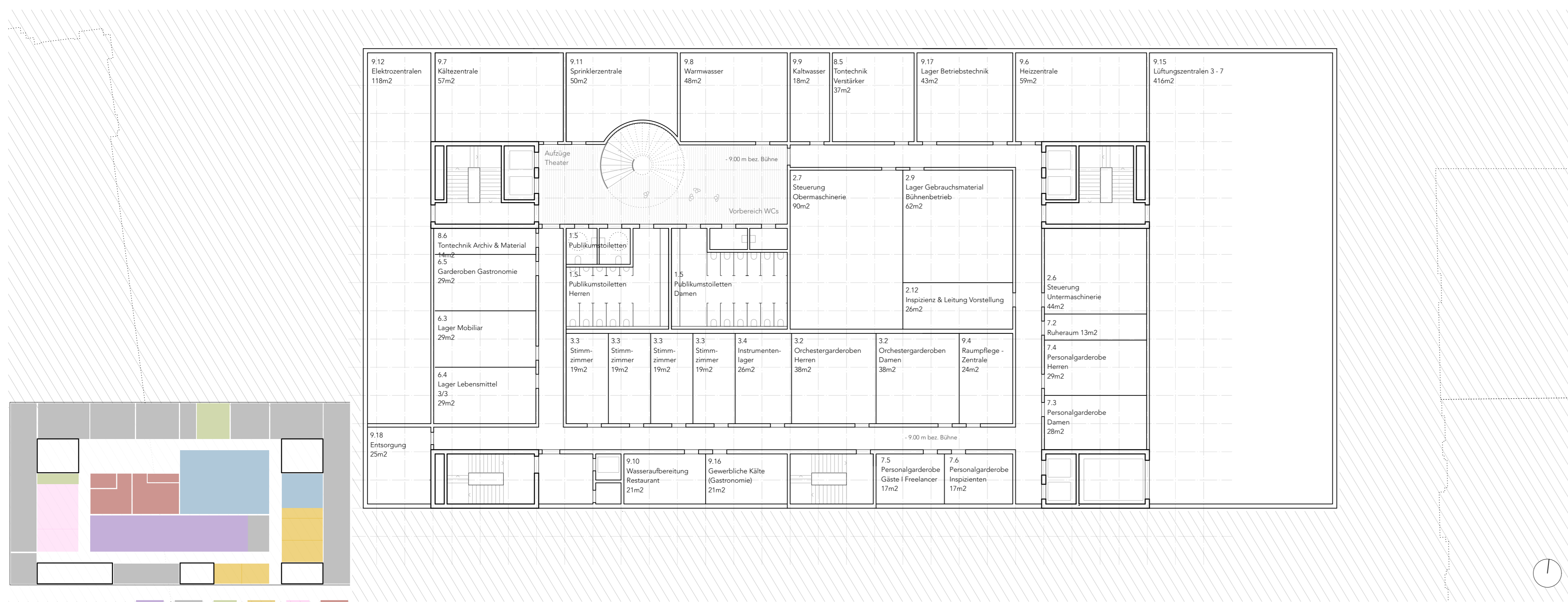
Ansicht Bahnhofstraße | M 1:200



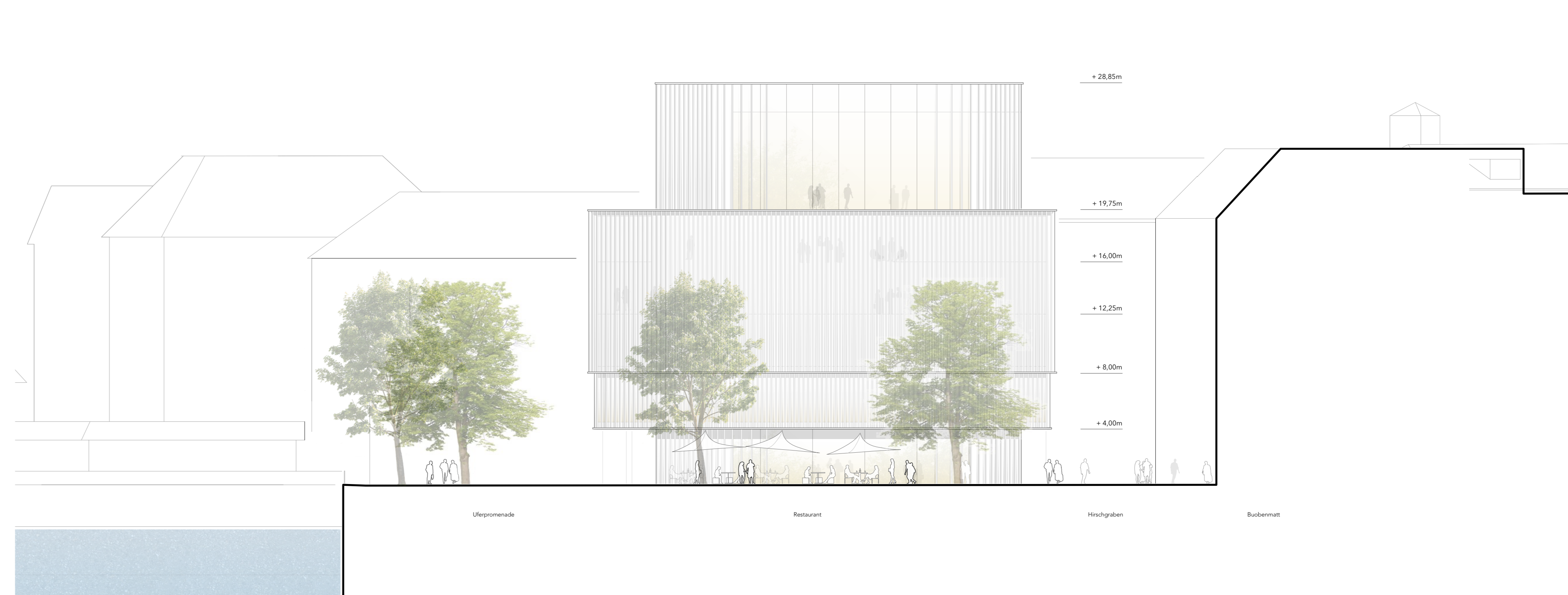
Grundriss 5.Obergeschoss | M 1:200



Grundriss 6.Obergeschoss (Technik + Luftraum) | M 1:200



Grundriss 1. Untergeschoss | M 1:200



Ansicht Theaterplatz | M 1:200