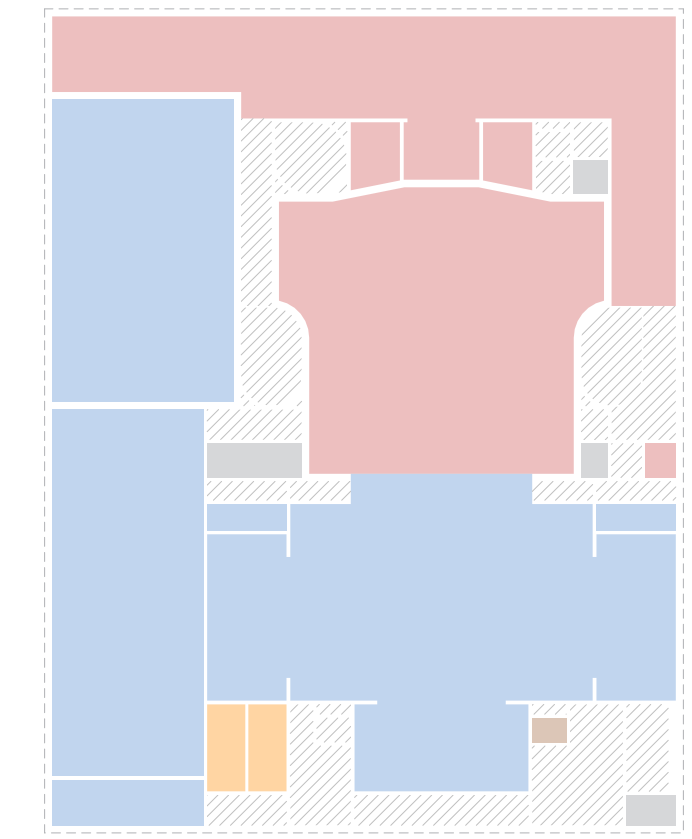
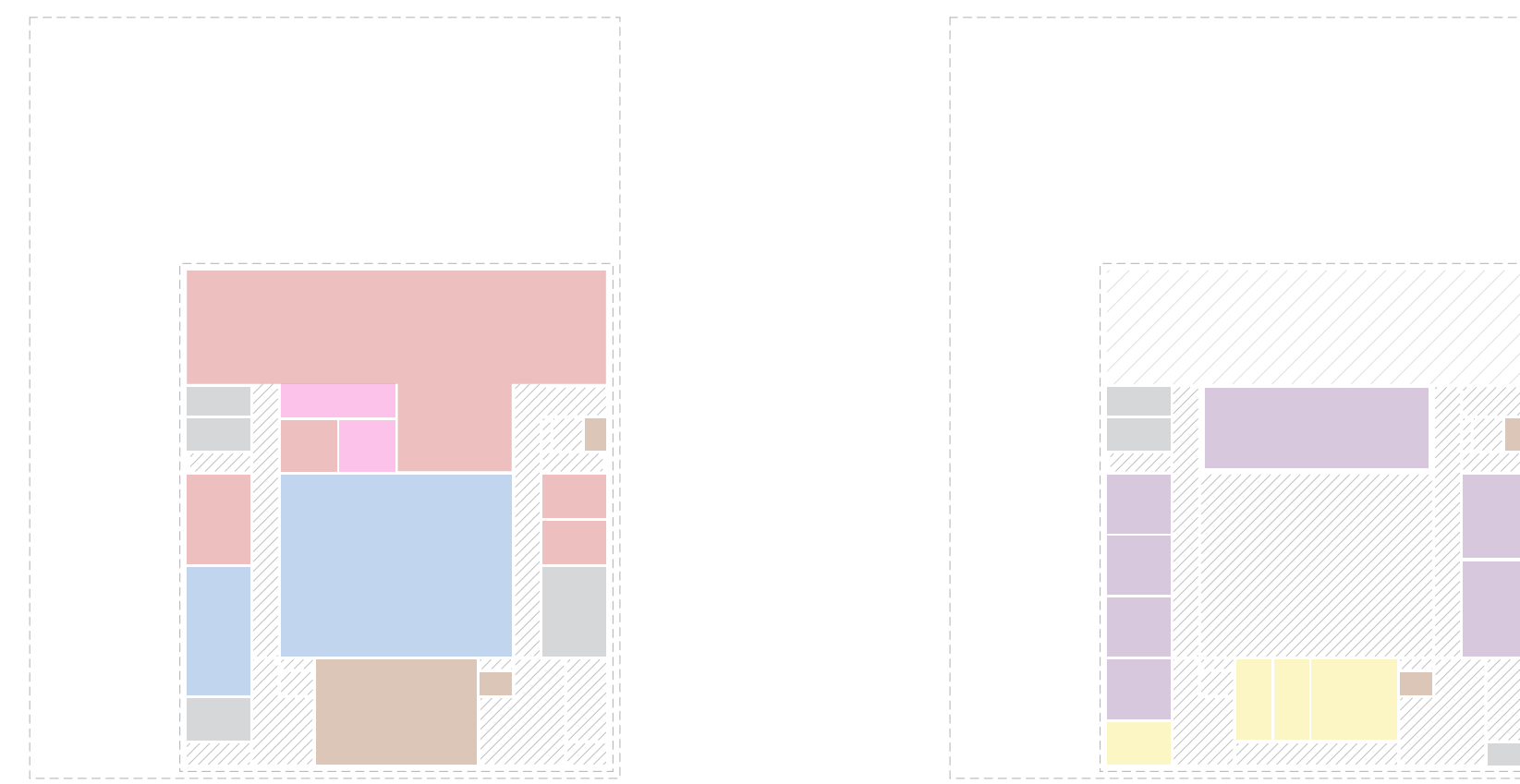
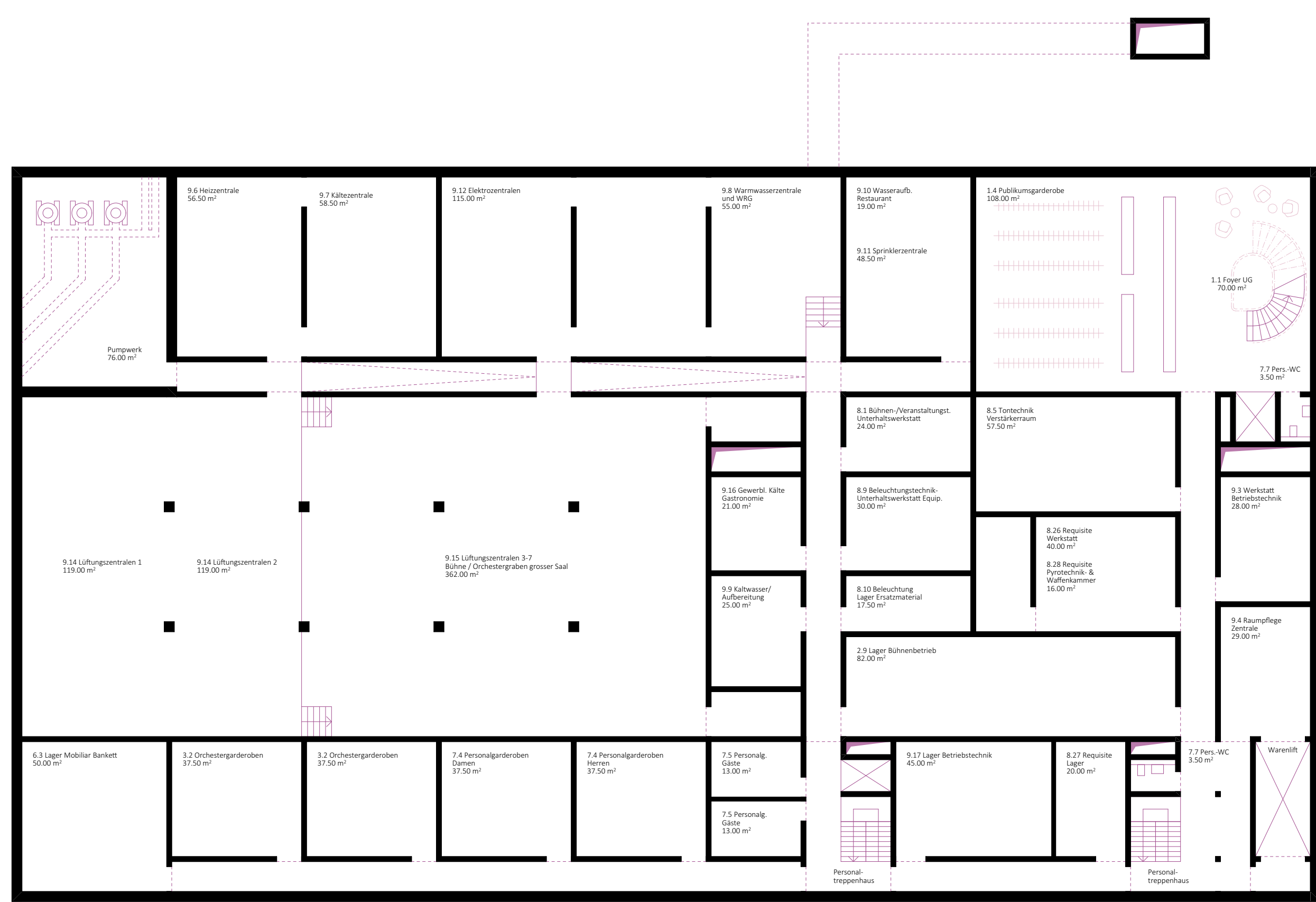
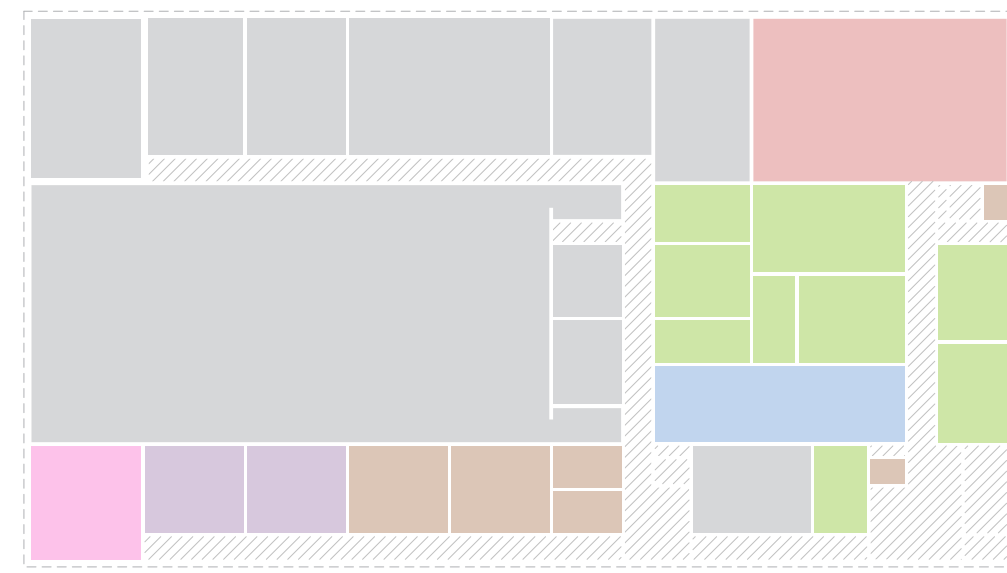


Querschnitt 1:200

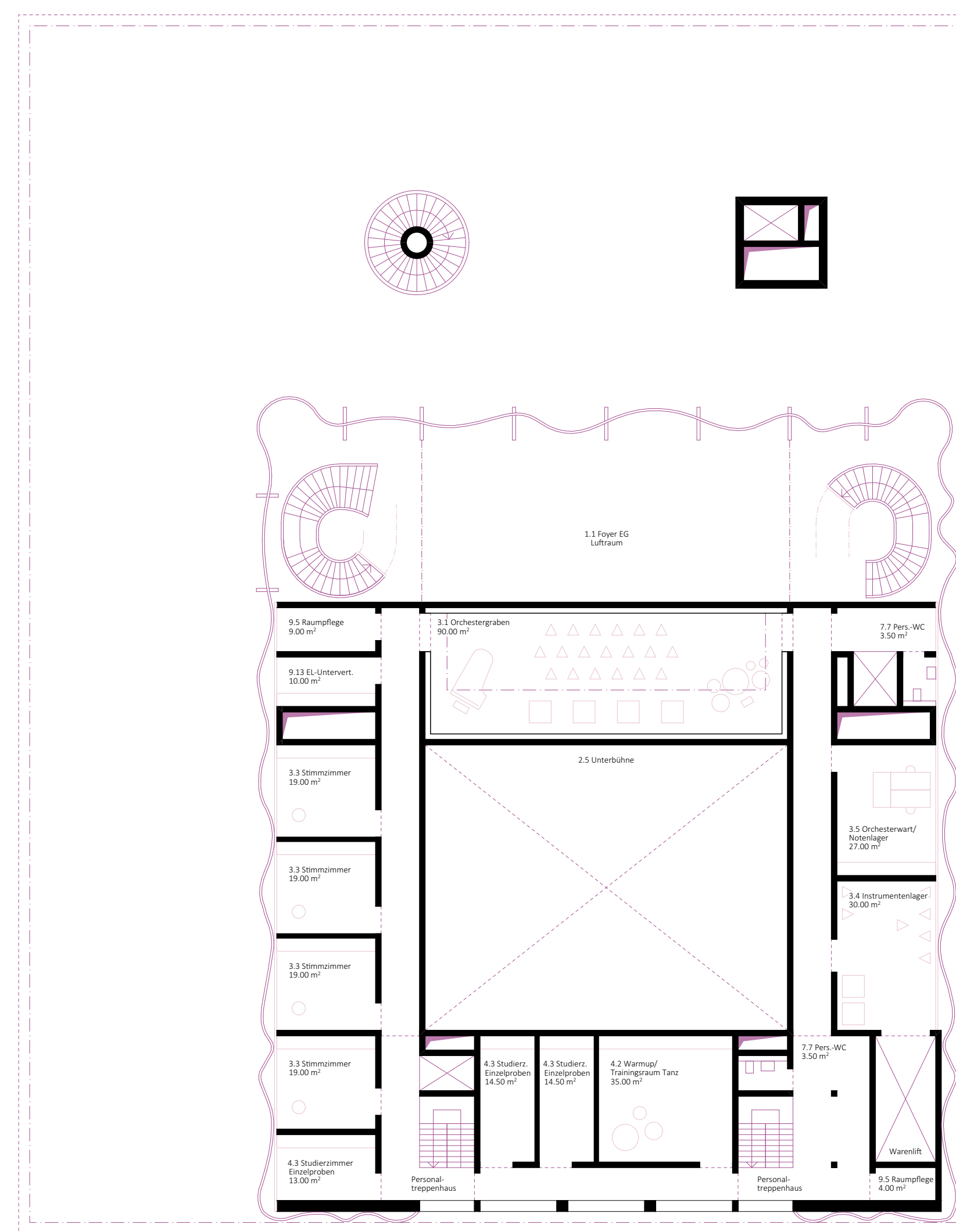


Raumprogramm Flächen Total

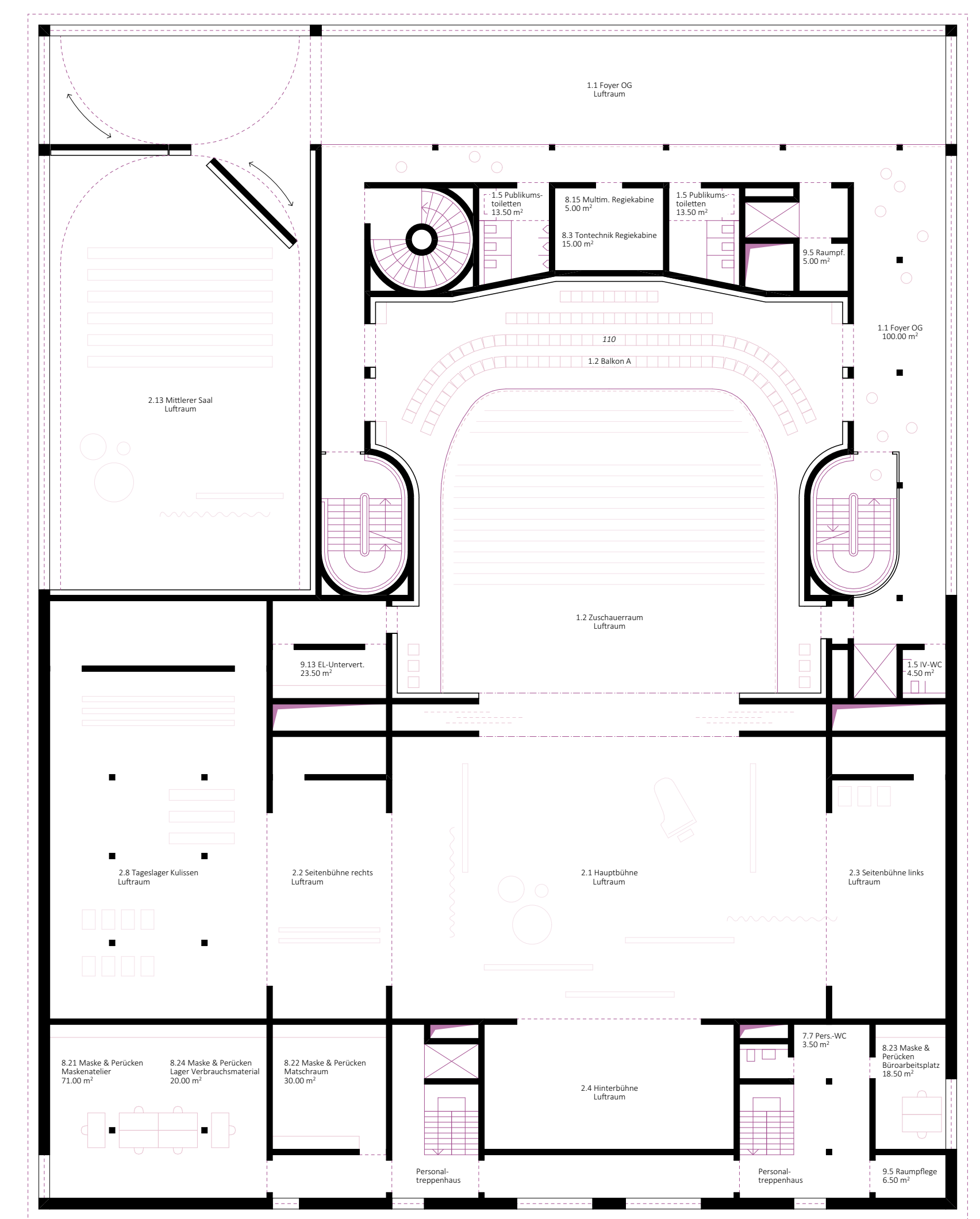
Publikumsräume	1'995.0 m ²
Bühnen- und Veranstaltungsräume	1'522.0 m ²
Orchesterräume	298.0 m ²
Studien- und Probenräume	242.0 m ²
Kunstlegardereben	242.0 m ²
Gastronomie	500.0 m ²
Personalaräume	334.0 m ²
Fachbereiche Veranstaltungsbetrieb	884.0 m ²
Betrieb, Gebäude- & Sicherheitstechnik	1'320.0 m ²



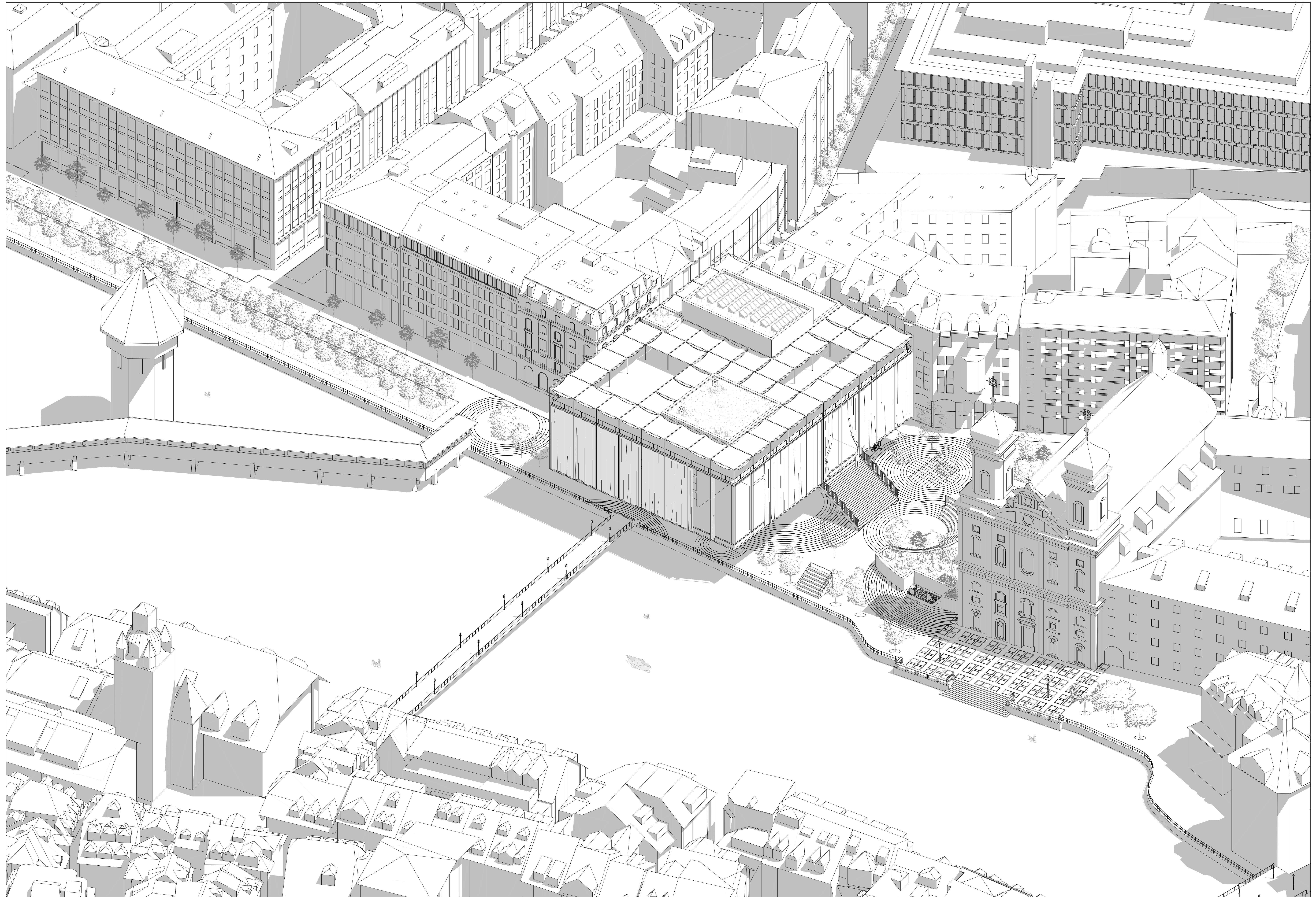
UNTERGESCHOSS 1:200



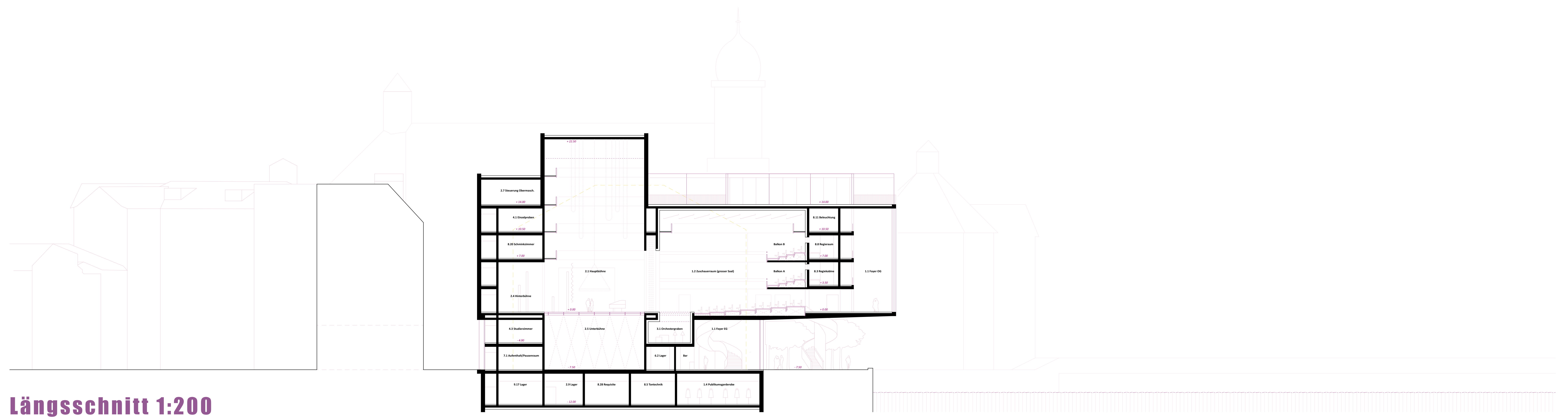
2. ERDGESCHOSS 1:200



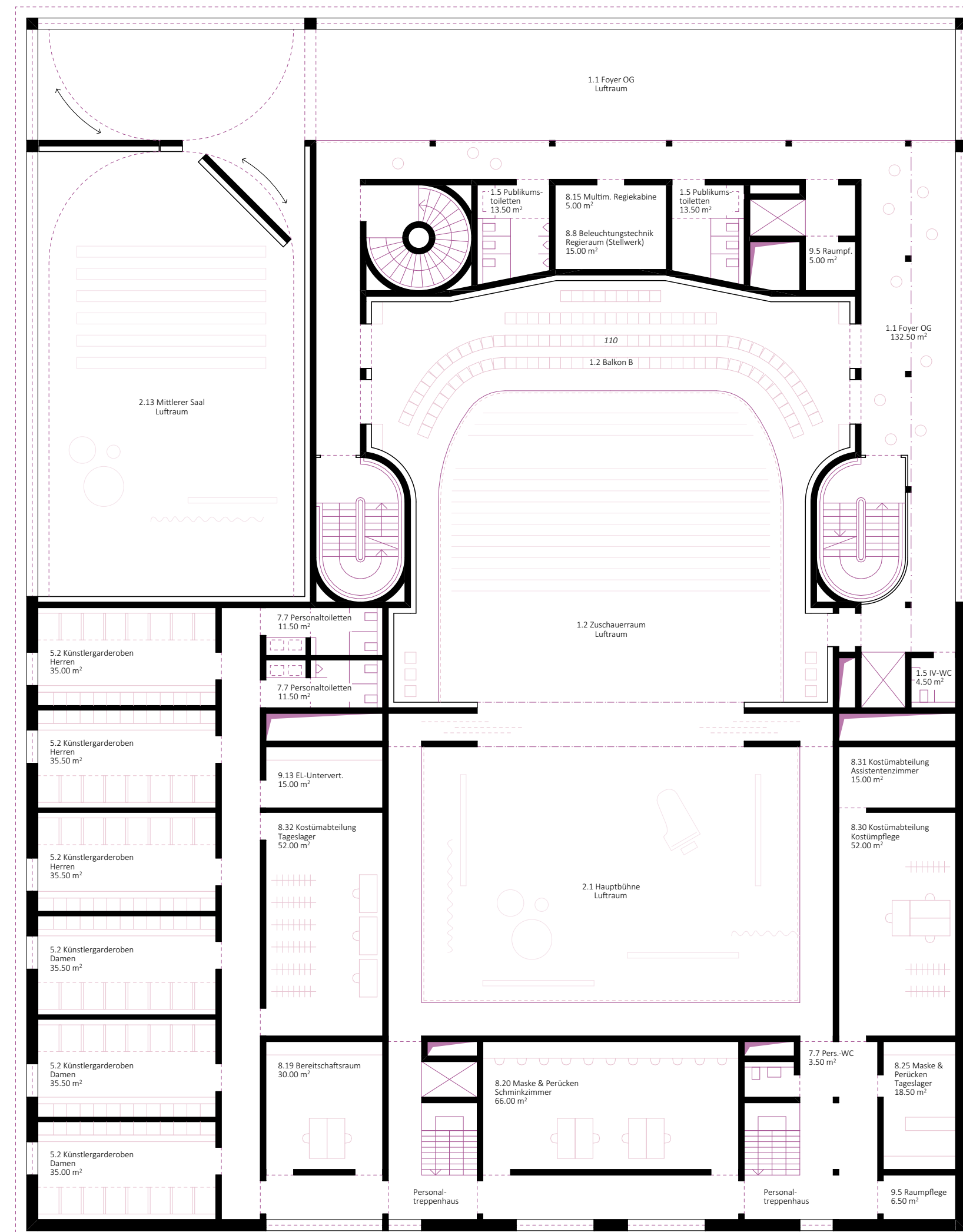
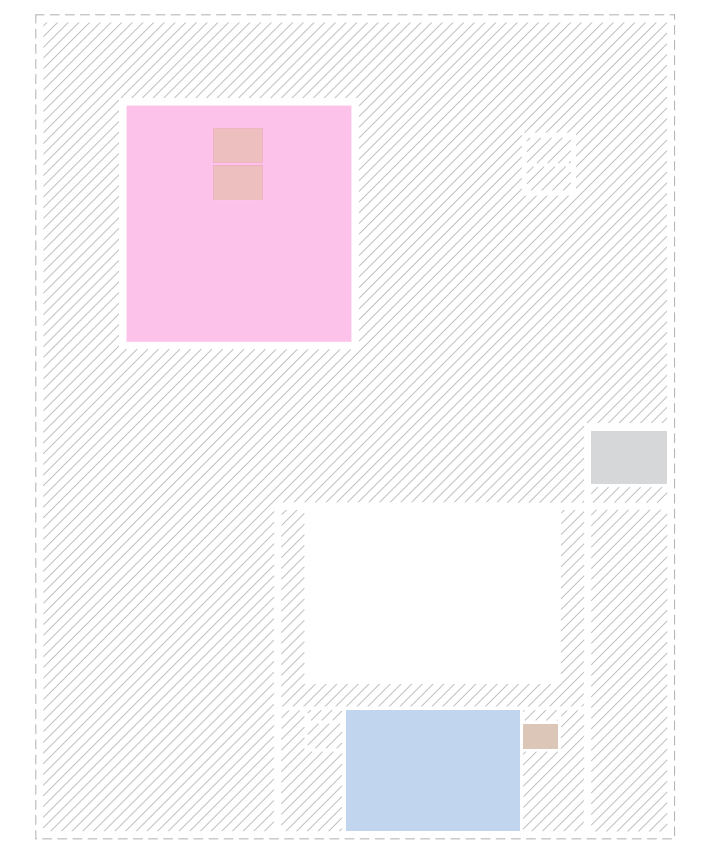
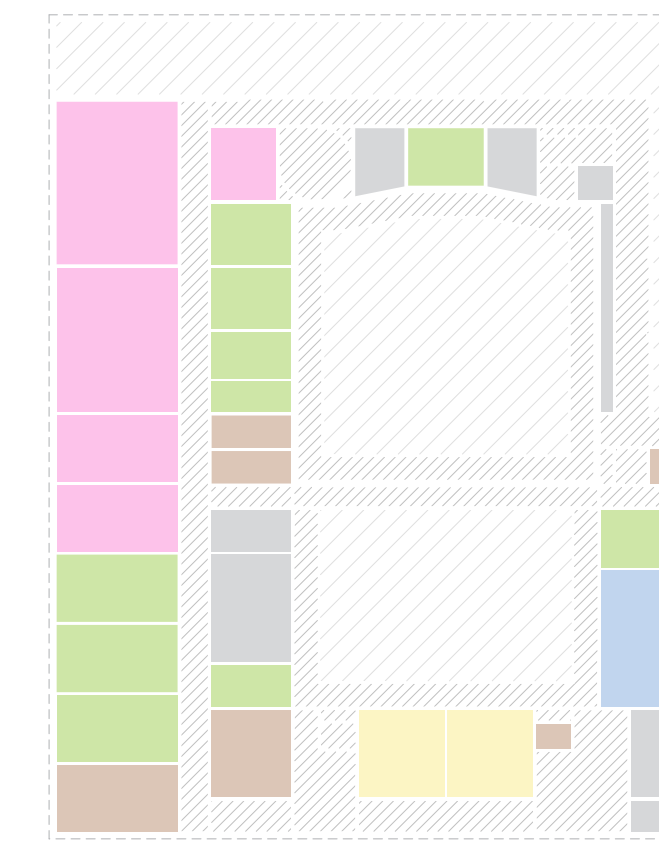
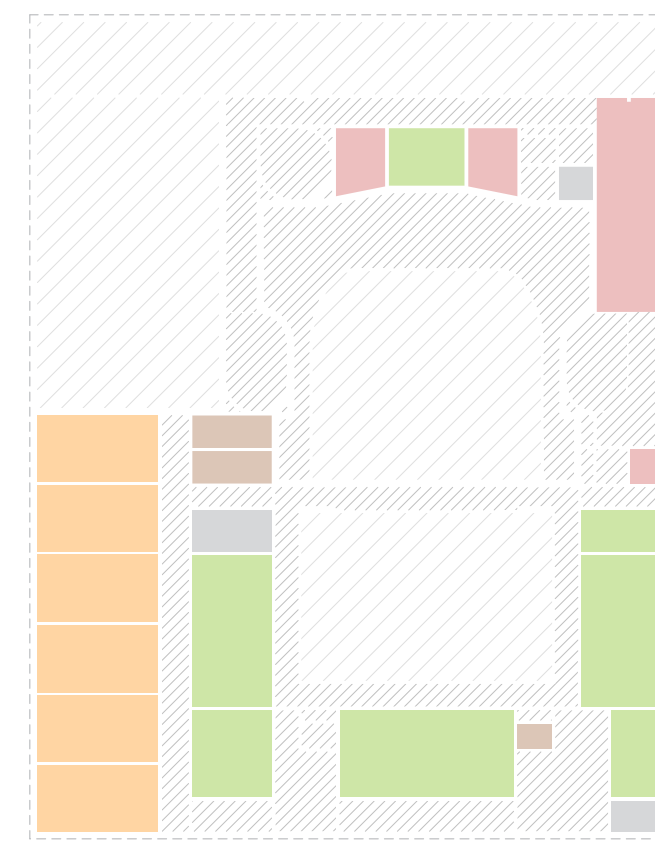
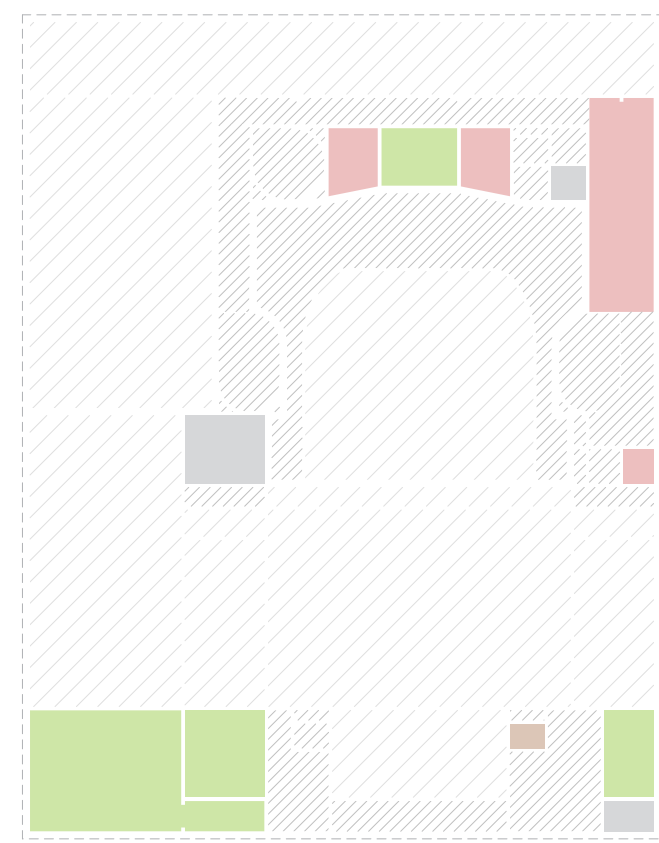
1. OBERGESCHOSS 1:200



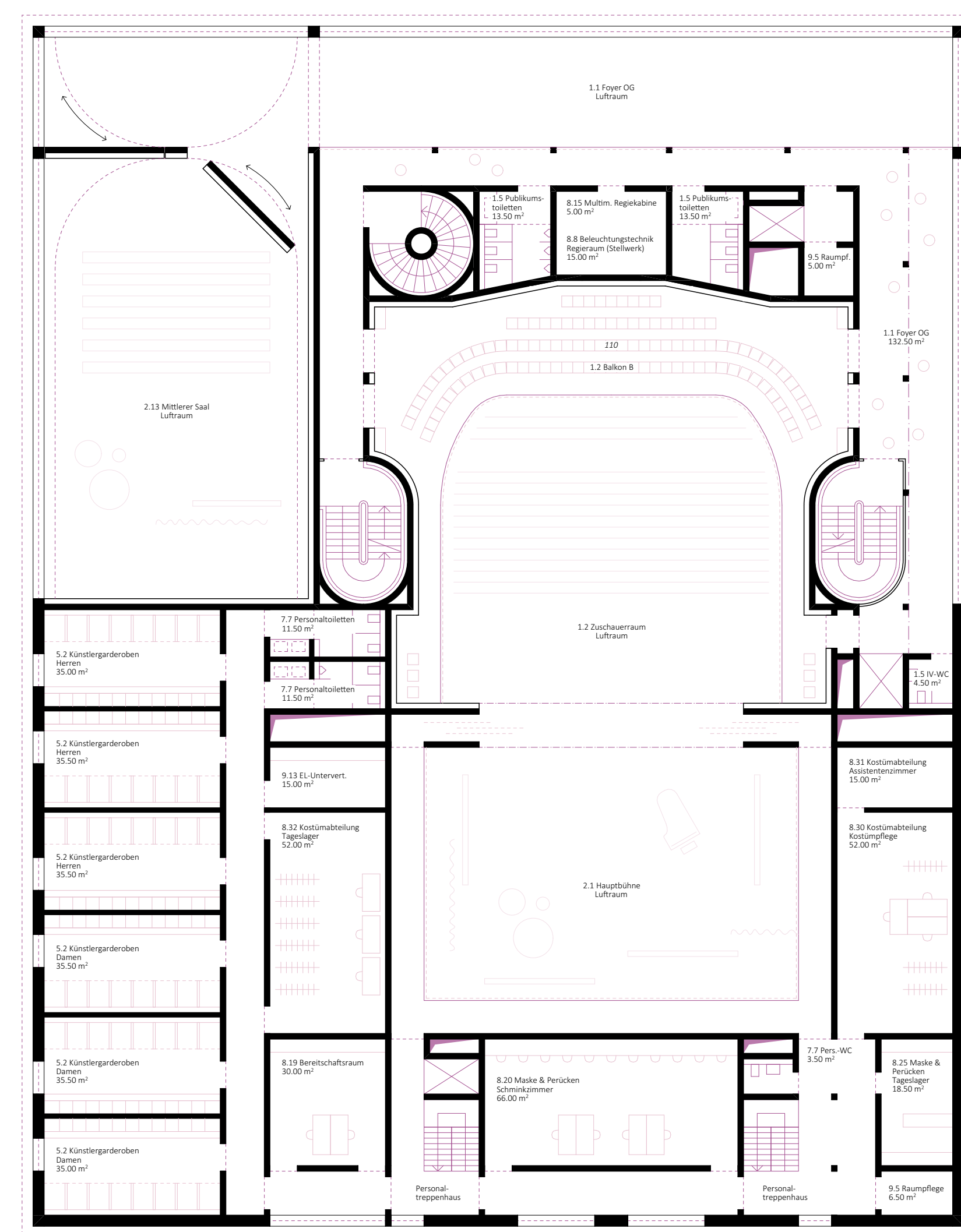
Isonometrische Axonometrie 1:300



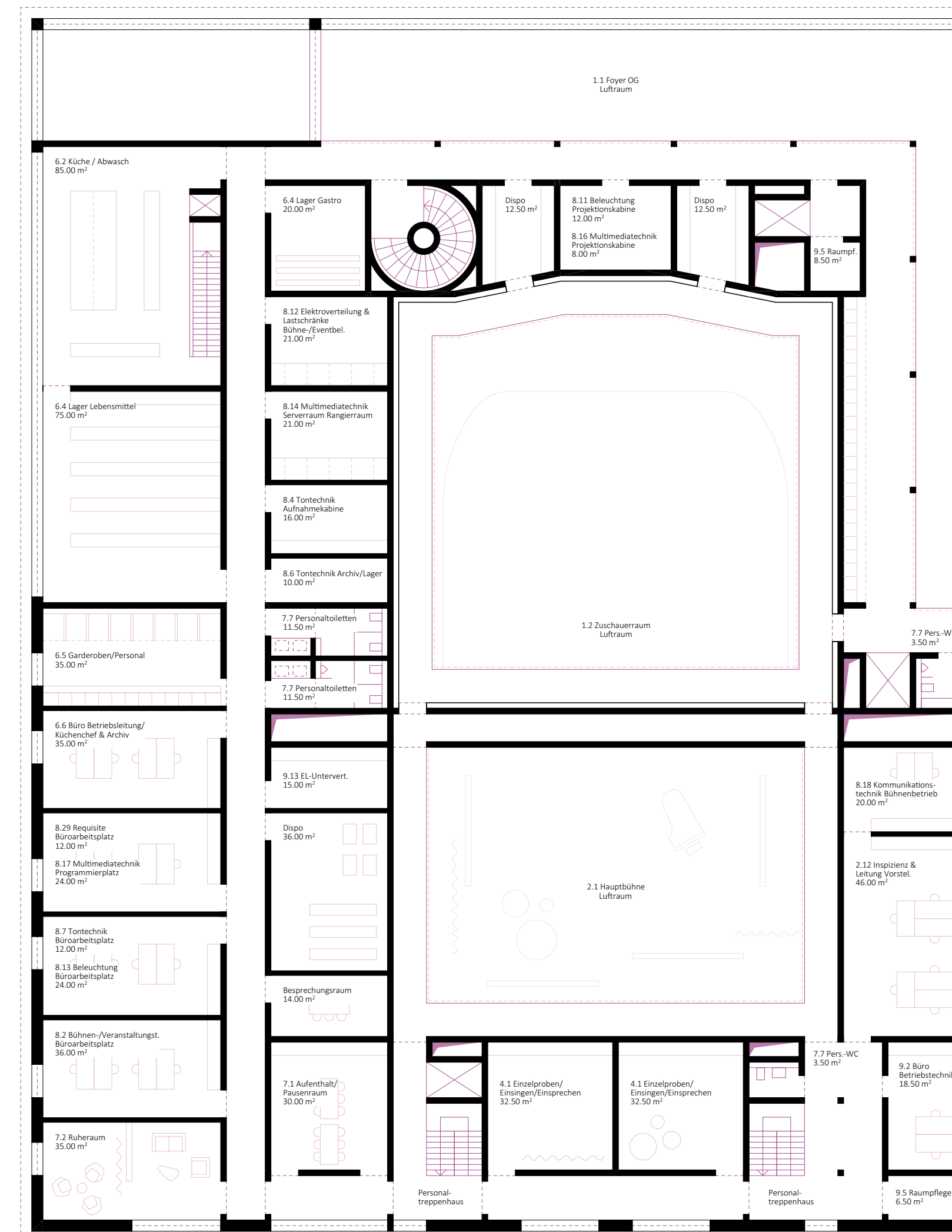
Längsschnitt 1:200



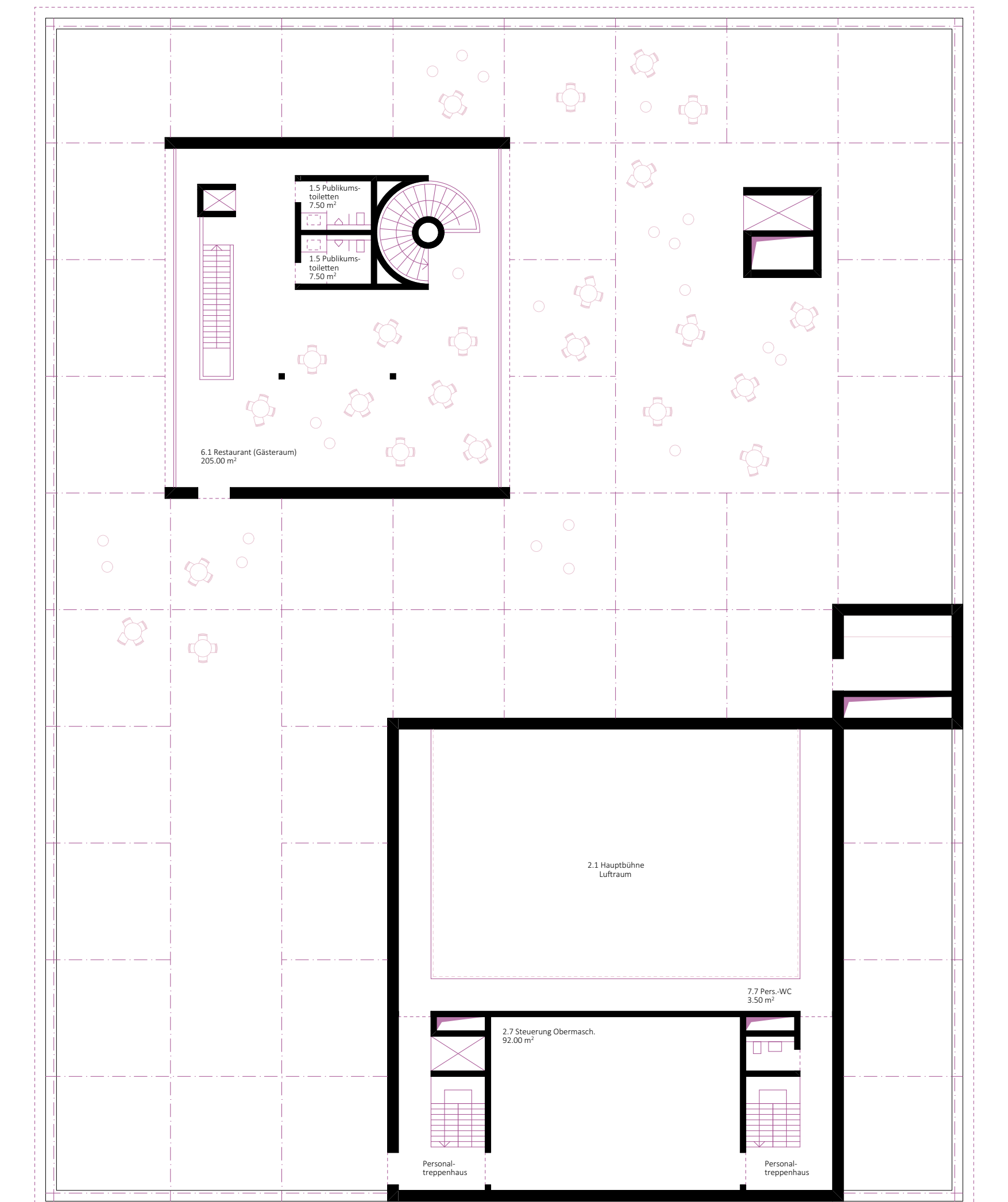
2. OBERGESCHOSS 1:200



3. OBERGESCHOSS 1:200



4. OBERGESCHOSS 1:200



DACHGESCHOSS 1:200